



EVENTS *AND*
CATERING

FOREWORD



At sbe, we have a reputation for being pioneers in the hospitality industry. As I reflect on our humble beginnings, I find myself in awe of what we have achieved in such a short time. The following pages are a celebration of the people, places and services that provide the framework for our continued commitment to innovation, service and standards of excellence. These values, along with sbe's signature style, have paved the way to where we are today.

I believe this is what sets us apart from everyone else. I take great pride in what we have built, and it goes without saying that we could not have achieved it without the support of our colleagues and clients.

SAM NAZARIAN

FOUNDER, CHAIRMAN AND CEO



TABLE *of* CONTENTS

04	INTRO
05	VENUES
22	EXPERIENCES
26	CATERING
27	EVERYBODY EATS



The
DIFFERENCE
IS IN THE DETAILS

sbe Events and Catering is where culinary innovation, handcrafted mixology and high design meet impeccable service, curated décor and alluring entertainment.

Propelled by the talent behind our exclusive culinary partnerships, our catering experts will custom-tailor your event with one-of-kind menus and signature offerings, creating unique personalized experiences for you and your guests wherever you choose to entertain.

LOS ANGELES
LAS VEGAS

VENUES



CASA DANI



KATSUYA



MXO



S BAR



ZOUK



HYDE



LOS ANGELES

CASA DANI

SPANISH · MEDITERRANEAN



365

RECEPTION

175 SEATED

CHEF'S COUNTER

OPEN AIR BEER GARDEN

BUILT-IN DJ CAPABILITIES

Casa Dani means Dani's House, derived from southern Spain's tradition of naming small family restaurants as if they were the Chef's home, and that is precisely Michelin Chef Dani Garcia's intention, opening the doors to his house through avant-garde cuisine and a menu featuring items inspired by Spain's Mediterranean south.

MENU COMING SOON

VENUE ONE SHEET





勝 KATSUYA \ Century City

365
RECEPTION

- 250 SEATED**
- LIVE SUSHI & ROBATA BAR**
- OMAKASE DINNER PROGRAM**
- OPEN AIR BEER GARDEN**

Katsuya Century City reintroduces itself with a new look, menu and evolution. Marking the 4th location in Los Angeles and the 11th globally, Katsuya Century City continues the nearly 20-year tradition of excellence that has brought them international acclaim and reinvents the brand for the following 20 years with a fresh new brand identity and menu.

MENU

VENUE ONE SHEET



勝 KATSUYA \ Hollywood



300
RECEPTION

235 SEATED
LIVE SUSHI BAR
OMAKASE DINNER PROGRAM
LIVE ROBATA BAR
DJ BOOTH
7,000 SQ FT

Fittingly located in the entertainment capital of the world, Katsuya Hollywood offers a stunning display of the art of entertaining. World-renowned designer Philippe Starck creates a universe of bold, provocative and dramatic decor, featuring illuminated photographs of Geisha, the muse and master of this art form. The location won Travel & Leisure's 2008 award for Best Design with its airy high ceilings and intimate Dragon Lounge.

MENU

VENUE ONE SHEET





勝 KATSUYA \ Brentwood

275

RECEPTION

180 SEATED

PRIVATE DINING ROOM

LIVE SUSHI & ROBATA BAR

OMAKASE DINNER PROGRAM

7,054 SQ FT

Combining the service and quality of a fine dining restaurant with the lively energy and casual vibe of a neighborhood hotspot, Katsuya Brentwood has quickly become the place for Angelenos and visitors alike. The restaurant offers spaces including the Dragon Room for private dining and lounge areas.

MENU

VENUE ONE SHEET



勝 KATSUYA \ L.A. Live



400
RECEPTION

200 SEATED
LIVE SUSHI BAR
OMAKASE DINNER PROGRAM
FLAT SCREEN SATELLITE TVS
FULL-SERVICE BAR
8,575 SQ FT

Resides amongst a select roster of restaurants and entertainment venues including the popular Microsoft Theater and adjacent to Crypto.com Arena. Named OpenTable's "Diner's Choice Hotspot", Katsuya features the dynamic pairing of Master Sushi Chef Katsuya Uechi and world-renowned designer Philippe Starck. The restaurant offers private dining and lounge areas as well as an expansive patio overlooking the L.A. Live promenade.

MENU

VENUE ONE SHEET



MXO



292

RECEPTION

150 SEATED

OUTDOOR PATIO

SOMMELIER & WINE CELLAR

CHEF'S TABLE EXPERIENCE

STATE-OF-THE-ART SOUND SYSTEM

MXO, meaning "Mexican Origins," is a contemporary Mexican Steakhouse centered around wood-fire cooking, in the heart of the culinary epicenter of West Hollywood. Created in collaboration with Chef Wes Avila and sbe, MXO pays homage to the traditional, culinary craft of Mexico, exquisitely elevated for Los Angeles and in between two of sbe's major nightclubs, Zouk and Hyde Sunset. MXO is perfectly located for any occasion.



MENU

VENUE ONE SHEET



135
GUESTS

- LUSH INDOOR & OUTDOOR LOUNGES
- FULL-SERVICE BAR
- FLEXIBLE EVENT SPACE
- DJ BOOTH

Tucked away in the iconic original Katsuya, S Bar Brentwood is a sultry lounge highlighting the art of making cocktails and celebrating the culture of mixology. The space features an indoor-outdoor experience featuring al fresco dining, offering an enjoyable environment that will smoothly transition into an evening of socializing under the stars.



VENUE ONE SHEET



ZOUK™
LOS ANGELES

500
RECEPTION

206 SEATED
FULL-SERVICE BAR
STATE-OF-THE-ART SOUND SYSTEM
AV CAPABILITIES
9,203 SQ FT

Nightingale, an iconic venue on La Cienega in West Hollywood, evolves into Zouk Los Angeles, a nightlife marvel in partnership with the ZOUK Group and designed by Studio Collective. Nestled among famed spots like Nobu and The Nice Guy, this reenvisioned space promises unparalleled nightlife luxury. Drawing inspiration from the Roaring Twenties and the Warner theaters, its Art Deco glamour is brought to life with reflective materials, curved furnishings, and sophisticated lighting, creating a backdrop of modern decadence.

MENU COMING SOON

ONE SHEET COMING SOON

EST.  2005

HYDE SUNSET

400

RECEPTION

130 LOUNGE STYLE SEATED

OUTDOOR PATIO

PROJECTION SCREENS

FULL-SERVICE BAR

STAGE

9,200 SQ FT

Located on an iconic corner of the Sunset Strip, Hyde Sunset has established itself as a Los Angeles institution and the flagship of a worldwide nightlife brand.

This classic destination represents a hybrid experience of cuisine and revelry offering a seasonal California menu, signature craft cocktails and an elegant yet inviting ambiance. After dinner, our nightlife room blossoms into an exclusive and lively party with LA's finest guests enjoying the music of our resident DJ's and the bottle service experience.

VENUE ONE SHEET

EST 2005

HYDE

LOUNGE

at



crypto.com
ARENA

250

GUESTS

STATE-OF-THE-ART

SOUND SYSTEM

CHEF-CURATED MENU

SPECIALTY COCKTAILS CREATED BY

RENOWNED MIXOLOGISTS

4,000 SQ FT

Hyde Lounge at Crypto.com Arena combines a luxe and sophisticated ambience with spectacular views of the best entertainment in Los Angeles.

The 4,000 square-foot ultra-lounge features three bars, ledge seating, a dancehall and a private great room. Floating LCD TV screens, rosewood walls, and plush table service provide a pristine viewing environment for some of the world's greatest concerts, shows, and sporting events.

VENUE ONE SHEET

KUMI



S BAR



CITIZENS KITCHEN + BAR



HYDE LOUNGE
AT T-MOBILE ARENA



LAS VEGAS



KUMI JAPANESE RESTAURANT + BAR



390

RECEPTION

250 SEATED

LIVE SUSHI BAR

AV AND BRANDING CAPABILITIES

10,000 SQ FT

Kumi Japanese Restaurant + Bar combines East-Asian ingredients with Korean flavors, creating a modern approach to Japanese cuisine. Utilizing sustainably sourced ingredients, guests can indulge in a variety of shared plates, seasonal fish selections, as well as an array of bold dishes including Steak Tartare, Kombu Steamed Chilean Sea Bass, and Wagyu Ribeye.

Complement your dining experience with a list of fine wines, Japanese whiskeys, ultra-premium sakes, and specialty libations. The architectural design of natural woods, cherry blossom hues, and steel accents paired with ambient beats, provide an upscale atmosphere for an exceptional evening in Las Vegas.



MENU

VENUE ONE SHEET



200

RECEPTION

136 SEATED

LUSH INDOOR LOUNGE

FLEXIBLE EVENT SPACE AND

DJ BOOTH

AV AND BRANDING CAPABILITIES

ARTFUL MIXOLOGY

3,121 SQ FT



Drawing from the energy and vibe of each location, S Bar Las Vegas reflects the character and edginess of the glimmering lights of The Strip. A place to meet and discover the best in the world of spirits, S Bar invokes the soul of classic social clubs and lounges, projecting them through a modern lens. The exclusive Los Angeles bar transformed into a luxurious space which introduces innovative craft cocktails and curated bites set in a lush lounge ambience.

MENU

VENUE ONE SHEET



CITIZENS

KITCHEN AND BAR

230

RECEPTION

175 SEATED

AV AND BRANDING CAPABILITIES

FULL-SERVICE BAR

HIGH DEFINITION TV'S

6,787 SQ FT



Located in the heart of Mandalay Bay, Citizens Kitchen & Bar features a creative and contemporary take on American food.

The menu features a broad range of signature favorites for breakfast, lunch and dinner. Citizens also offers a vast selection of beers as well as a full-service bar to complement the decadent fare. The approachable menu, lively music and comfortable atmosphere are poised to satisfy the tastes of any and all guests.

MENU

VENUE ONE SHEET

EST.  2005

HYDE

LOUNGE

at

T Mobile ARENA

700
GUESTS

18,000 SQ FT

DEDICATED VIP ELEVATOR ACCESS
STATE-OF-THE-ART SOUND SYSTEM AND
DJ BOOTH
SEMI-PRIVATE EVENT SPACE

Hyde Lounge at T-Mobile Arena sets a new standard for Las Vegas luxury entertainment. The 18,000-square-foot venue extends over the arena's general seating to provide unparalleled views of world-class concerts and sporting events, as well as sweeping floor-to-ceiling window views of the Vegas strip. Guests enjoy gourmet cuisine, custom mixology from four full service bars and table side bottle service, all from the comfort of a luxurious lounge with private living rooms accented by modernized antique styling. Sports, music, and entertainment fans looking for the most opulent seats need look no further than Hyde Lounge at T-Mobile Arena.

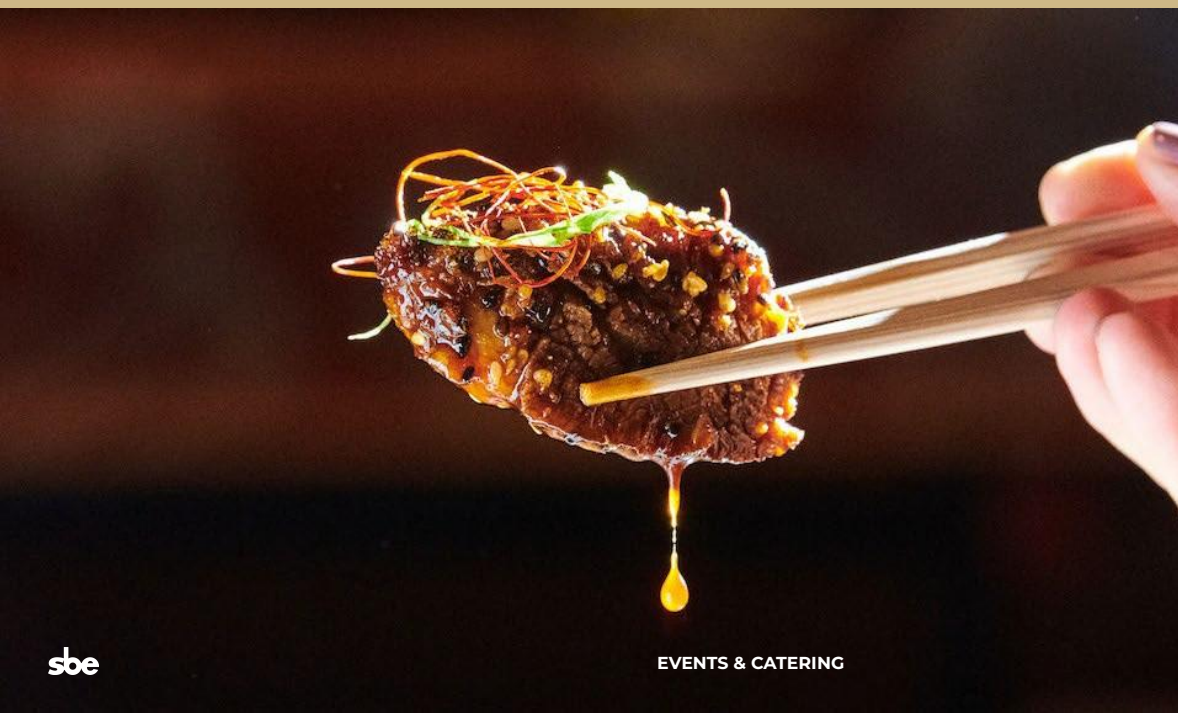
MENU

VENUE ONE SHEET



OFFSITE CATERING

Propelled by the talent of our Award-winning chefs, our expert catering team will work with you to customize one-of-a-kind menus featuring our restaurants' signature offerings. Together, we'll make sure your guests are treated to the highest in culinary skill with delicious and unique offerings chosen by you in the location of your choice to create a memorable experience for all.



PREFERRED VENUES

LOS ANGELES

DTLA

Exchange LA
City Market Social House
California Science Center
Rolling Greens DTLA
The Majestic
Alexandria Ballrooms
Hudson Lofts
Grass Room/Valentine
Row DTLA
Two Bit Circus
Union Station

HOLLYWOOD

Academy LA
Houdini Estate
Lombardi House
Casita
The Vermont

WESTSIDE

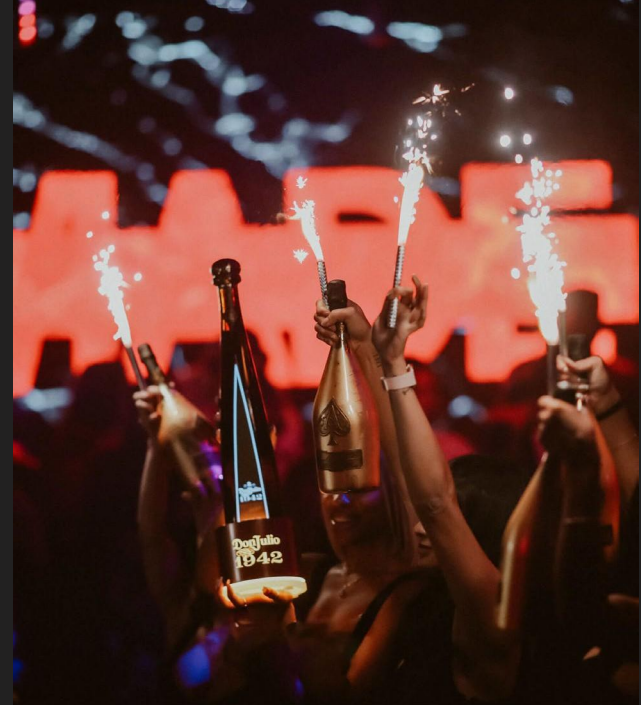
The Barker Hangar
The Wallis (Beverly Hills)
Adamson House
Playa Studios
Smog Shoppe
The Pavilion (Century City)
Hummingbird Nest Ranch

LAS VEGAS

The Smith Center
Las Vegas Country Club
The Industrial
Keep Memory Alive Center



CORPORATE EVENTS
SOCIAL EVENTS
WEDDINGS &
SINGLE-LIFE SEND-OFFS
PRIVATE DINING



EXPERIENCES



CORPORATE EVENTS

We like to think outside the boardroom. At sbe, we execute professional functions with our signature style, hospitality and critically-acclaimed innovation to create a whole new corporate experience. This includes combining our stunning, unique settings with inventive culinary offerings and best-in-class service that impresses everyone from prospective clients to discerning executives.



SOCIAL EVENTS

Planning a celebratory dinner for friends or an elegant charity fundraiser, we believe that entertaining is an art form, which is why we create and curate every detail, just for you. Beginning with décor and ambience, paired with customized menus and cocktails, we ensure that each event is unique and lives up to the occasion.



WEDDINGS & SINGLE-LIFE SEND-OFFS

From the engagement dinner to the reception, sbe catering and our award-winning collection of hotels, restaurants and nightlife venues provide everything you need to make sure your complete cycle of wedding events comes off without a hitch – well, maybe just one.



PRIVATE DINING

sbe provides you with access to private and semi-private dining rooms, tucked away within our award-winning restaurants. Dine by high design with custom menus, premium mixology and best-in-class hospitality that are that leave your guests feeling cared for and impressed.

Everybody Eats

Everybody eats features premium casual restaurant brand concepts. Perfect for festival style events, or add-ons to social and corporate gatherings.

LEARN MORE



Everybody Eats

BRANDS & MENUS



KRISPY RICE



MENU



TOMA



MENU



UMAMI BURGER

MENU



HECHO LIBRE
MADE FREE

MENU



SAMOTO

サモト

MENU



CICCI DI CARNE

BY DARIO

MENU



EL POLLO VERDE

ROASTED ORGANIC CHICKEN
SALAD & BOWLS

MENU



SAM'S
CRISPY CHICKEN

MENU



SOOM SOOM

MENU

THANK YOU

sbe