



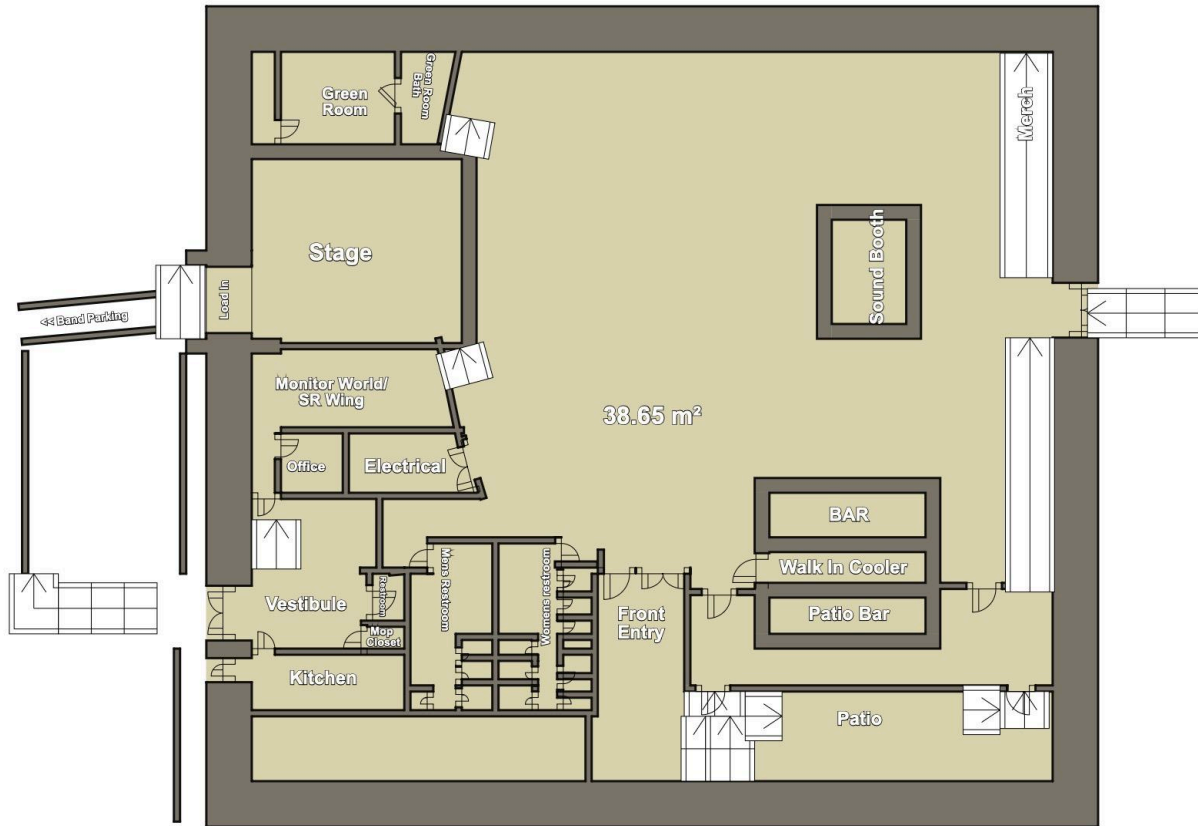
Main Room (5,000 sq ft)

Set Up Style	Max Number of Attendees
Banquet (No Buffet)	200
Banquet with 14'x14' Dance Floor (No Buffet)	180
Banquet w/ Buffet	180
Ceremony & Reception	110
Standing	1,200
Theatre	400

- Pricing will vary by exact space and date. Please inquire for pricing and availability
- Tables and chairs must be sourced from a third-party rental service
- Audiovisual equipment is available for rent
- A 50% non-refundable retainer is required to secure your event, an additional damage deposit may be required
- Building access is 8 hours. Additional hours may be purchased in advance for \$750 per hour
- Catering must be ordered through a third party
- Service Fee and Taxes apply
- Security is mandatory for all events where alcohol is served
- Prices are subject to change without notice

Detailed meeting space requirements will be finalized in collaboration with the event manager.

Room Specifics



Parking

We are located at 1022 Senate Street in downtown Columbia's Vista neighborhood, where plenty of parking garages, lots and street parking is on hand nearby. In addition to our own parking lot onsite with limited spaces, two of the many parking garages nearby include 1007 Park St and 851 Park St.

Main Room

Spacious, modern design with a large stage and professional sound and lighting systems. Its flexible layout and vibrant atmosphere make it an ideal space for any occasion, whether hosting live entertainment or a formal gathering.

Green Room/Bridal Suite

Private, comfortable space designed for relaxation and preparation. With cozy seating and a peaceful atmosphere, it offers a quiet retreat for guests to unwind and get ready.

Outdoor Patio

Offers a relaxed, open-air setting with comfortable seating and a welcoming ambiance. Perfect for enjoying fresh air, mingling, or adding an element of charm to any event, it complements the venue's dynamic atmosphere.



DIRECTIONS

The Senate
1022 Senate Street - Columbia, SC 29201
803-252-9392

From I-26 From Charleston

(Includes Baton Rouge, Texas and all points west of New Orleans)

- Head Northwest on I-26 W
- Take Exit 72 for SC-121 toward Whitemire/Union
- Turn left on SC-121 S
- Merge onto I-26 E via the ramp to Columbia
- Keep left at the fork to continue on US-76E follow signs for I-26/Downtown/Columbia
- Continue onto I-26 E/US-76-E
- Take the exit toward Huger Street and continue on Huger St
- Turn left onto Gervais Street
- Turn right onto Park Street

I-20 from Atlanta

(Includes Mississippi Gulf Coast, Florida, and all points east of New Orleans)

- Get on I-20 W
- Follow I-20 W to SC-277 S
- Continue on SC-277. Take Bull St. to Senate St.



Hotels and Restaurants Nearby

Hilton Garden Inn
Hyatt Place
Double Tree by Hilton Hotel

The Hollow
Ambrosia Taverna
Ruth Chris Steakhouse
929 Kitchen and Bar
Market on Main
Bourbon
Mr. Friendly's New Southern Cafe
Chick-Fil-A



Bar Service

(Includes, Ice, Mixers and Soda)

Full Bar

\$2500 Beverage Minimum

Full Tab Bar includes Premium-liquor, Beer, Wine, Mimosa, Cocktails, Sodas, and Water. If the beverage minimum is not met, the client is responsible for paying the balance at the closing of the event.

Client will indicate when to close the tab. Any amount over the \$2500 tab will be paid at the end of the night with the credit card we have on file.

Includes plastic stemware upon request

Cash Bar

\$2800 Beverage Minimum

Cash Bar includes Beer, Wine, Mimosa, Mocktails, Sodas, and Water. Guests buy their own drinks. If the beverage minimum is not met, the client is responsible for paying the balance at the closing of the event via card. We do not accept cash payments.

Includes plastic stemware upon request

Bronze Beverage Package

\$42/person

3 Hours of unlimited service for all guests over 21. Includes beer, wine, mimosas, and mocktails.

Set up fee and Bartender fee per 100 guests - \$130

Bartender Services

Minimum of 3 hours required.

20% gratuity/bartender included in the final cost.

***As stated in our contract, The Senate must serve/pour alcoholic beverages. The Senate reserves the right to refuse to any persons who our trained bartenders and Event Managers deem excessively intoxicated.**

The Senate requires security at all events when alcohol is served.



AUDIOVISUAL

Our venue is equipped with top-of-the-line AV equipment to ensure your event runs smoothly. We provide **2 wireless handheld microphones**, **30 microphone stands** (22 tall and 8 short), and **2 projector screens** for presentations, performances, or other multimedia needs. Additional AV equipment is available upon request, and for more information, be sure to check out our **Private Events Deck** for further details on our offerings.