



ELENA'S Two Groovy

TWO GROOVY PARTY





PARTY VENDORS

Desserts
@ashleyscakeshop

Balloons
@lovemeeventdesign

Bounce House & Ballpit
@wildchildarizona

Photography
@staceyborregophotography





WOODY'S ROUND-UP PARTY





PARTY VENDORS

Cake
@sherry.bakes.cakes

Ballons + Decor
@confetti.please

Cupcakes
@perthcupcake

Sensory Kits
@mini_milestonesaz



ONE HAPPY DUDE PARTY





PARTY VENDORS

Desserts
@toosweet-cakes

Ballons
@createandinflateevents

Charcuterie
@thecharcuteriecreative

Ballpit
@softplayrentalamairany

Photography
@socreative-photo



CONSTRUCTION ZONE PARTY







Birthday Party FAQ's

Private Parties

Q: What is the pricing structure for private parties?

A: We charge a flat rate of \$300/hour for private parties, with a minimum of two hours (inclusive of set-up time).

Q: What do I need to do to reserve a date/time?

A: We require a \$100 nonrefundable deposit to hold the date/time.

Q: On what days can I book a private party?

A: We offer private parties every day of the week (including Sundays, when we are closed for regular drop-in play), except from 11 am to 3 pm on Tuesday-Thursday, and 11 am to 4 pm on Fridays.

Q: What does a private party offer?

A: A private party comes with two dedicated employees who will help set up, assist throughout the party, and take down the party (breakdown time is not included in the time you pay for, but we do not charge for the breakdown time). You also have exclusive use of the entire playspace. Private parties may host up to 35 children and a total of 60 guests. The birthday child also receives a Leo & Luca t-shirt.

Q: Can my vendors drop off items prior to our scheduled time?

A: We can accommodate deliveries on the day of your party, but will not have dedicated refrigeration for any deliveries.

Q: Are there any restrictions on decorations?

A: We ask that guests do not bring in glitter and do not attach decorations to the walls without employee assistance. Other than that, design away!



Q: How early may we arrive?

A: You can arrive up to 15 minutes before your scheduled time to set up. Due to open play times, Leo & Luca cannot guarantee 15 minutes of pre-party access to the entire facility; instead, the Party Host will have early access to the art/event room only. Additional setup time in the open play space and café should be accounted for in the number of hours booked. If the Party Host and/or the Party Host's vendors gain(s) access to the space more than 15 minutes prior to the party time or stay(s) past the party end time (each time determined based on the initial booking), the Party Host will be charged the Private Party Rate or the Semi-Private Party Rate for every additional 15-minute increment.

Q: What table seating do you offer?

A: We have seating for 8 adults in the cafe space, and three benches for adults in the play area. The art room/event space has tables and chairs for 16 children (see attachment for layout). Feel free to use the existing seating or bring in your own.

Q: What vendors do you offer?

A: One of the best parts of planning a birthday at Leo & Luca is that we don't require the use of any vendors—you are free to bring in the vendors of your choice! We have some local favorites if you need recommendations. Due to the size of our shopping center, we do have restrictions on where vendors can park—see below for additional details.

Q: We want to bring in breakfast/lunch/dinner. What do you recommend?

A: There are so many incredible restaurants nearby, but some favorites are George's Kitchen (same shopping center), Niccoli's (same shopping center), Dos Chris Charcuterie & Bakery (across the street), and Aftermath. See below for additional vendor recommendations.

Q: Do you offer any add-ons?

A: In addition to not restricting vendors, we can arrange for sensory gift party favors that are designed to fit your theme and for themed sensory/art activities during the party for an additional fee.



Semi-Private Parties

Q: What is the pricing structure for semi-private parties?

A: We charge a flat rate of \$200 an hour for up to 10 children over 6 months old, with a minimum of two hours (inclusive of setup time).

Q: What do I need to do to reserve a date/time?

A: We require a \$100 nonrefundable deposit to hold the date/time.

Q: What does a semi-private party offer?

A: A semi-private party comes with exclusive use of the art room/event space, a dedicated employee to assist with setup and breakdown, and a reduced number of children permitted for open play.

Q: On what days can I book a semi-private party?

A: We offer semi-private parties every day of the week (except Sundays, when we are closed for regular drop-in play, and from 11 am to 3 pm on Tuesday-Thursday, and 11 am to 4 pm on Fridays).

Q: Are there any restrictions on decorations?

A: We ask that guests do not bring in glitter and do not attach decorations to the walls without employee assistance. Other than that, design away!

Q: How early may we arrive?

A: You can arrive up to 15 minutes before your scheduled time to set up. Due to open play times, Leo & Luca cannot guarantee 15 minutes of pre-party access to the entire facility; instead, the Party Host will have early access to the art/event room only. Additional setup time in the open play space and café should be accounted for in the number of hours booked. If the Party Host and/or the Party Host's vendors gain(s) access to the space more than 15 minutes prior to the party time or stay(s) past the party end time (each time determined based on the initial booking), the Party Host will be charged the Private Party Rate or the Semi-Private Party Rate for every additional 15-minute increment.



Q: Can my vendors drop off items prior to our scheduled time?

A: We can accommodate deliveries on the day off, but will not have dedicated refrigeration for any deliveries.

Q: What table seating do you offer?

A: The art room/event space has tables and chairs for 16 children (see attachment for layout). Feel free to use the existing seating or bring in your own.

Q: What vendors do you offer?

A: One of the best parts of planning a birthday at Leo & Luca is that we don't require the use of any vendors—you are free to bring in the vendors of your choice, as long as the vendors/items brought in fit in the art room/event space. We have some local favorites if you need recommendations. Due to the size of our shopping center, we do have restrictions on where vendors can park—see below for additional details.

Q: We want to bring in breakfast/lunch/dinner. What do you recommend?

A: There are so many incredible restaurants nearby, but some favorites are George's Kitchen (same shopping center), Niccoli's (same shopping center), Dos Chris Charcuterie & Bakery (across the street), and Aftermath. See below for additional vendor recommendations.

Q: Do you offer any add-ons?

A: In addition to not restricting vendors, we can arrange for sensory gift party favors that are designed to fit your theme and for themed sensory/art activities during the party for an additional fee



Recommended Vendors

Balloon Arches & Décor

- Love Me Event Design
- Confetti Please
- Balloon Girl Phx

Bounce Houses & Soft Play

- Wild Child Arizona
- Soft Play Rental Amairany

Catering

- Niccoli's Deli
- George's Kitchen
- Dos Chris' Bakery & Charcuterie Co.
- The Charcuterie Creative

Cookies, Cakes & Other Desserts

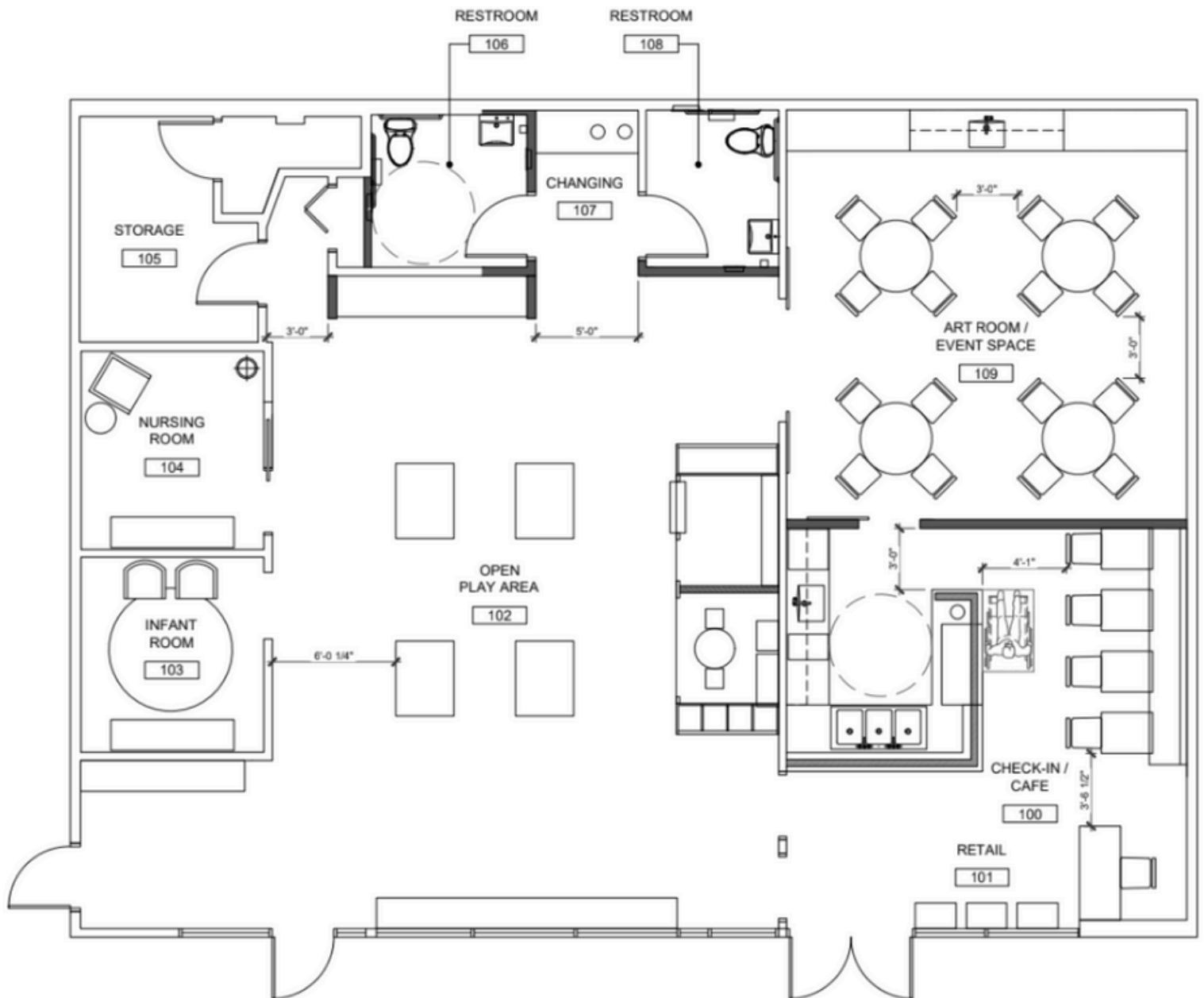
- Scottsdale Cookie Co.
- Sherrie Bakes Cakes
- Perth Cupcakes
- Truly Popsicle
- Scoopwell's Dough Bar

Party Favors

- Pauli Dough (discounted pricing available if ordered through Leo & Luca)
- Tiny Souls
- Mini Milestones



Leo & Luca Floor Plan





Leo & Luca Vendor Parking

Please have any vendors park in the area marked in yellow below:

