

ABIGAIL KIRSCH

AT THE LOADING DOCK

# Make Your Setting Shine





# The downtown style and spirit of SoHo loft living is

transported to Fairfield County at The Loading Dock, a hub of event innovation.

Located 45 minutes from Manhattan and easily accessible to the MTA, this shape-shifting venue is the essence of modernity, offering more than 15,000 square feet of flexible white space along with industrial elements such as exposed ductwork and hardwood floors.

Celebrated caterer Abigail Kirsch offers new ways to highlight seasonal ingredients and intriguing flavors while bringing a fresh perspective to crowd-pleasing classics. This talented team is fueled by passion and purpose to make the intricate look effortless. Each experience is crafted to balance culinary creativity and next-level service with timeless sophistication and modern ease.

**Endless possibilities await.**

# Event Spaces

The Loading Dock exclusively hosts one event at a time, providing a variety of versatile spaces to enhance and personalize your experience.

## Gallery

Welcoming Area  
*650 sq ft*

## Sanctuary

Seated Dinners, Receptions  
*2,500 sq ft*

## Arcade

Private Suite, After Party, Add-on Space  
*1,200 sq ft*

## Max Capacity

Ceremony: 300 | Reception: 450 | Seated: 400 | Seated with Dance Floor: 325

## Studio

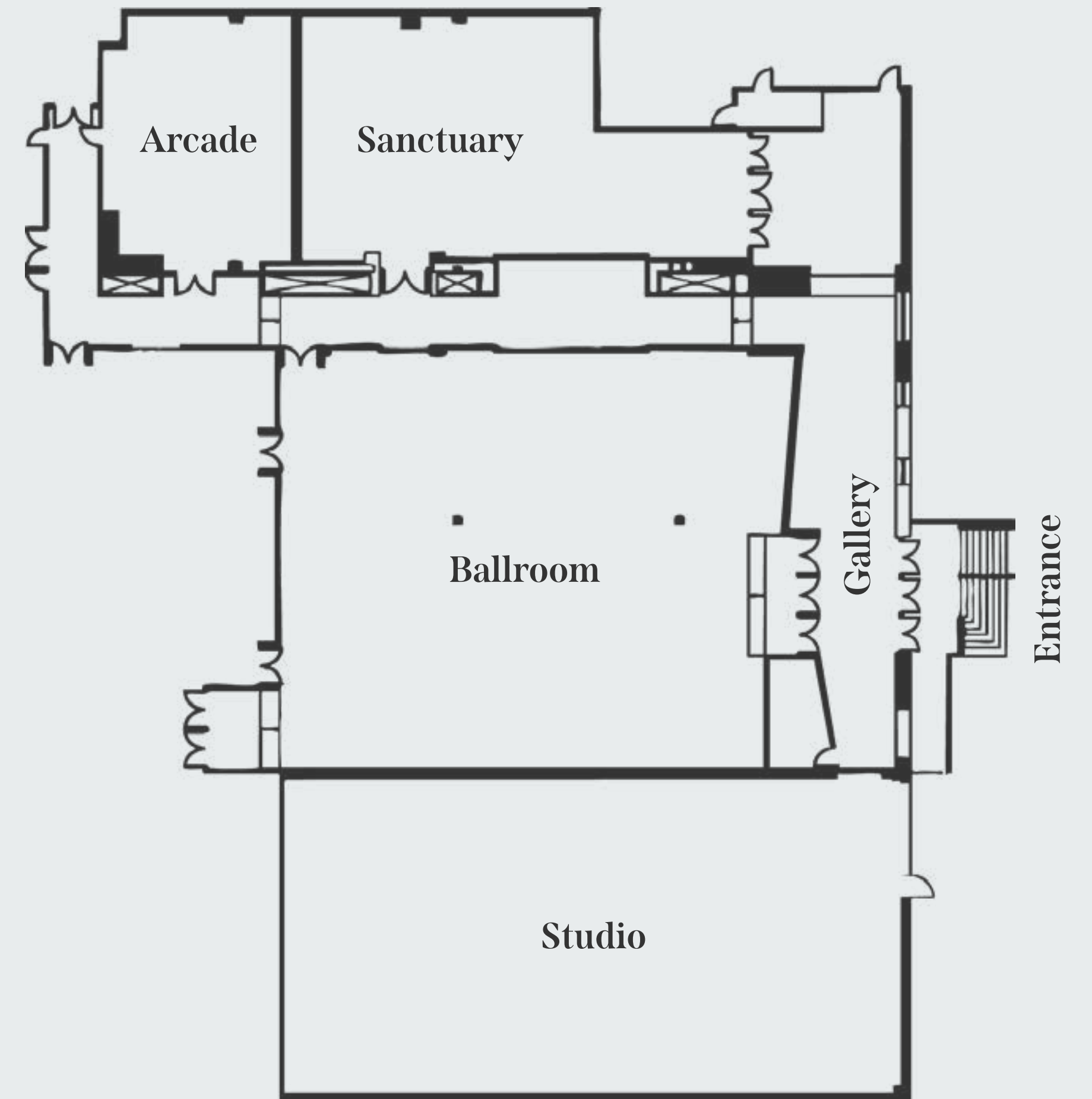
Ceremony, Cocktail Receptions  
*4,000 sq ft*

## Ballroom

Seated Dinners, Receptions  
*5,450 sq ft*

## Private Suite

Hair & Makeup, Ketubah Signing



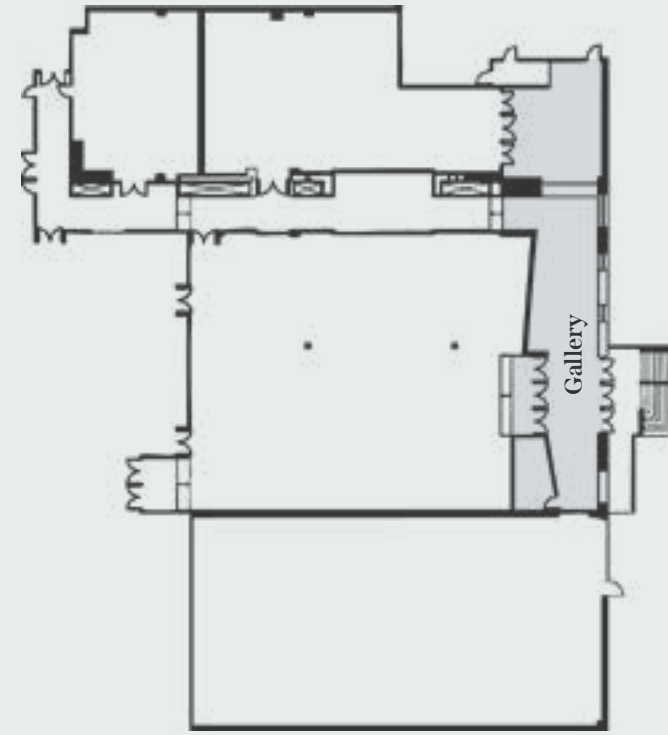


## Gallery

Welcoming Area  
*650 sq ft*

### Features

- Soaring Windows
- Chandeliers
- Mirrors

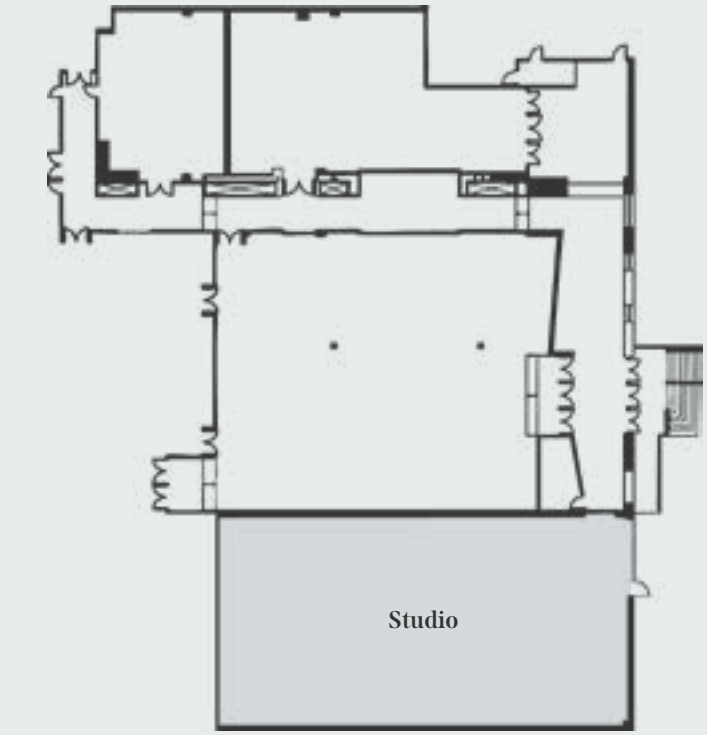


## Studio

Ceremony, Cocktail Receptions  
*4,000 sq ft*

### Features

- Expansive Brick Wall
- Industrial Cement Floors



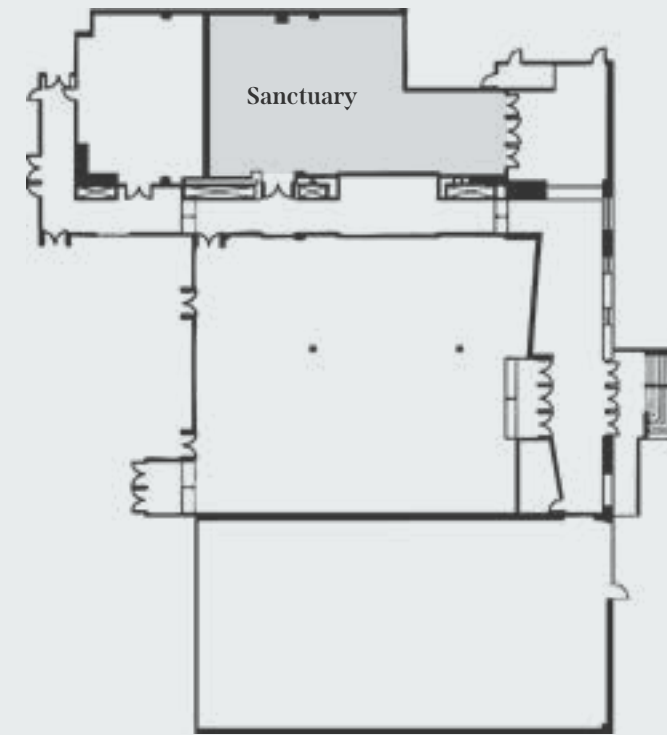


## Sanctuary

Cocktail Hour  
*2,500 sq ft*

### Features

- Exposed Ceilings & Ductwork
- Hardwood Floors
- Skylights

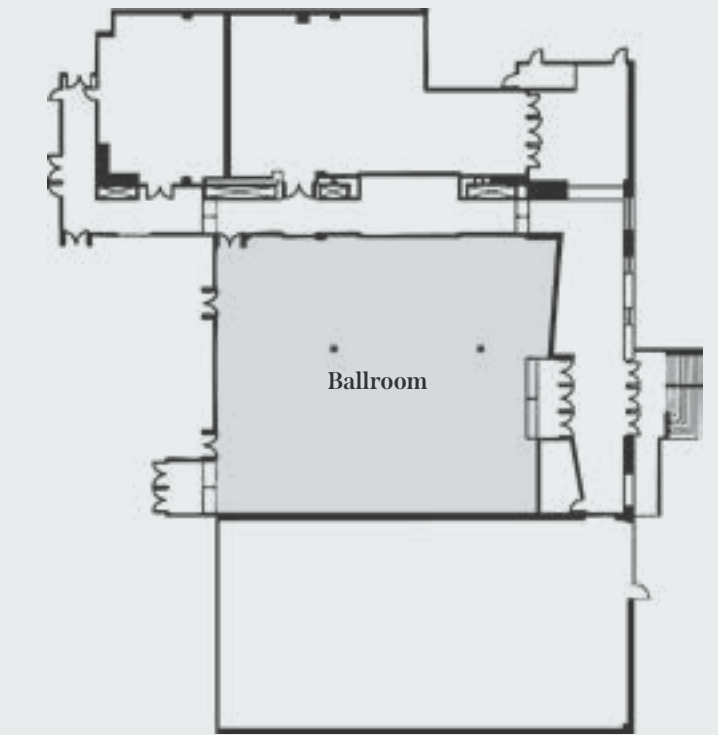


## Ballroom

Dinner Receptions  
*5,450 sq ft*

### Features

- Exposed Ceilings & Ductwork
- Hardwood Floors



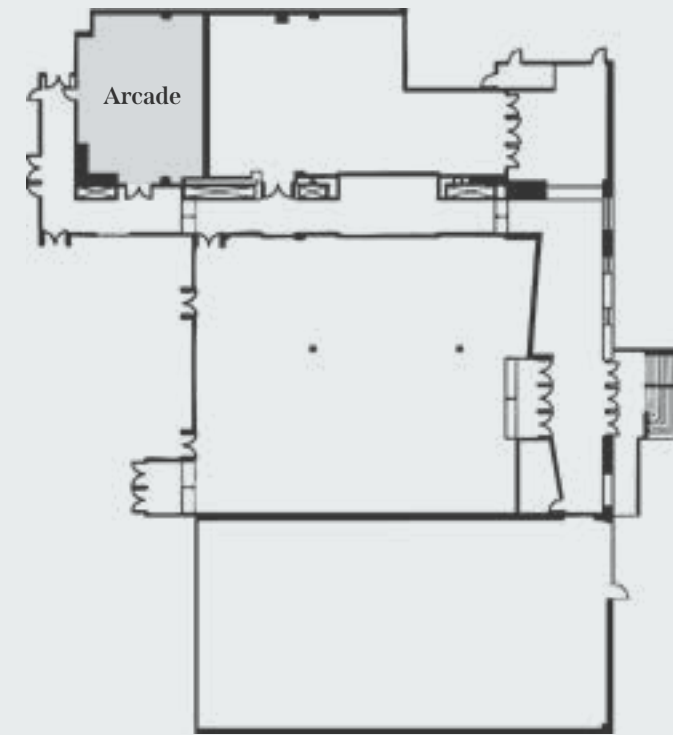


## Arcade

Private Suite, After Party, Add-on Space  
*1,200 sq ft*

### Features

- Variety of Interactive Games



## Private Suite

Hair & Makeup, Ketubah Signing

### Features

- Television
- Full Sized Vanity with Lighting
- Private Entrance with Door Code
- Hidden Safe
- Steamer





# Venue Inclusions

## Partyware & Furniture

- Choice of black, gray, or white table linens & napkins
- High-top tables & cocktail tables with chairs for cocktail reception
- Lucite chairs & Chiavari chairs
- 60", 66", 72" round tables for dinner reception
- Sweetheart table
- Modern white china, glassware, flatware
- Light-up bars
- Votives for cocktail reception
- Assortment of white lounge furniture
- Podium
- Stage for band
- Arcade games
- Printed dinner menu (one per table)

## Lighting

- Pin spot lighting
- Accent LED up lighting to wash walls throughout all event spaces
- Chandeliers in gallery



## Property Access

- One event per day
- Indoor ceremony location
- Vendor load-in starting at 10am on the day of wedding
- Access to private suites 4-hours prior to ceremony start time
- Vendor load-out 1½ hours past conclusion of wedding



## Menus

Abigail Kirsch delivers a bold, chef-driven dining experience where innovative flavors and artful presentation come together to create a wedding menu as dynamic as the venue itself.





# Event Services

## Sales Manager

Your sales manager will be your main point of contact for all planning discussions regarding weddings and answer any questions you may have throughout the process.

## Event Manager

Six to eight weeks before your event, you will be assigned an event manager who will be your main point of contact for all logistics of your wedding day. The event manager and team will guide you through the finer details of the day, bring your vision to life and manage the flow of the day.

## Event Day Support

- Event Captains
- Servers
- Bartenders
- Dedicated Wedding Party Attendant
- Coat Check Attendant
- Valet Parking
- Setup & Breakdown





# Wedding Packages

## Gold

\$225 per person

### One-Hour Cocktail Reception

- Eight Butlered Hors d'Oeuvres
- Charcuterie & Grazing Station

### Four-Hour Dinner Reception

- Appetizer with Tableside Bread Service
- Tableside Choice of Entrée
- Wedding Cake

### Beverage Service

- Five-Hour Premium Open Bar
- Premium Spirits, Assorted Wines & Beers
- Soft Beverages, Juices, Flat & Sparkling Water
- One Specialty Cocktail
- Sparkling Wine Toast during Dinner
- Tableside Wine Service during Dinner
- Tableside Coffee & Tea Service with Dessert

## Platinum

\$255 per person

### One-Hour Cocktail Reception

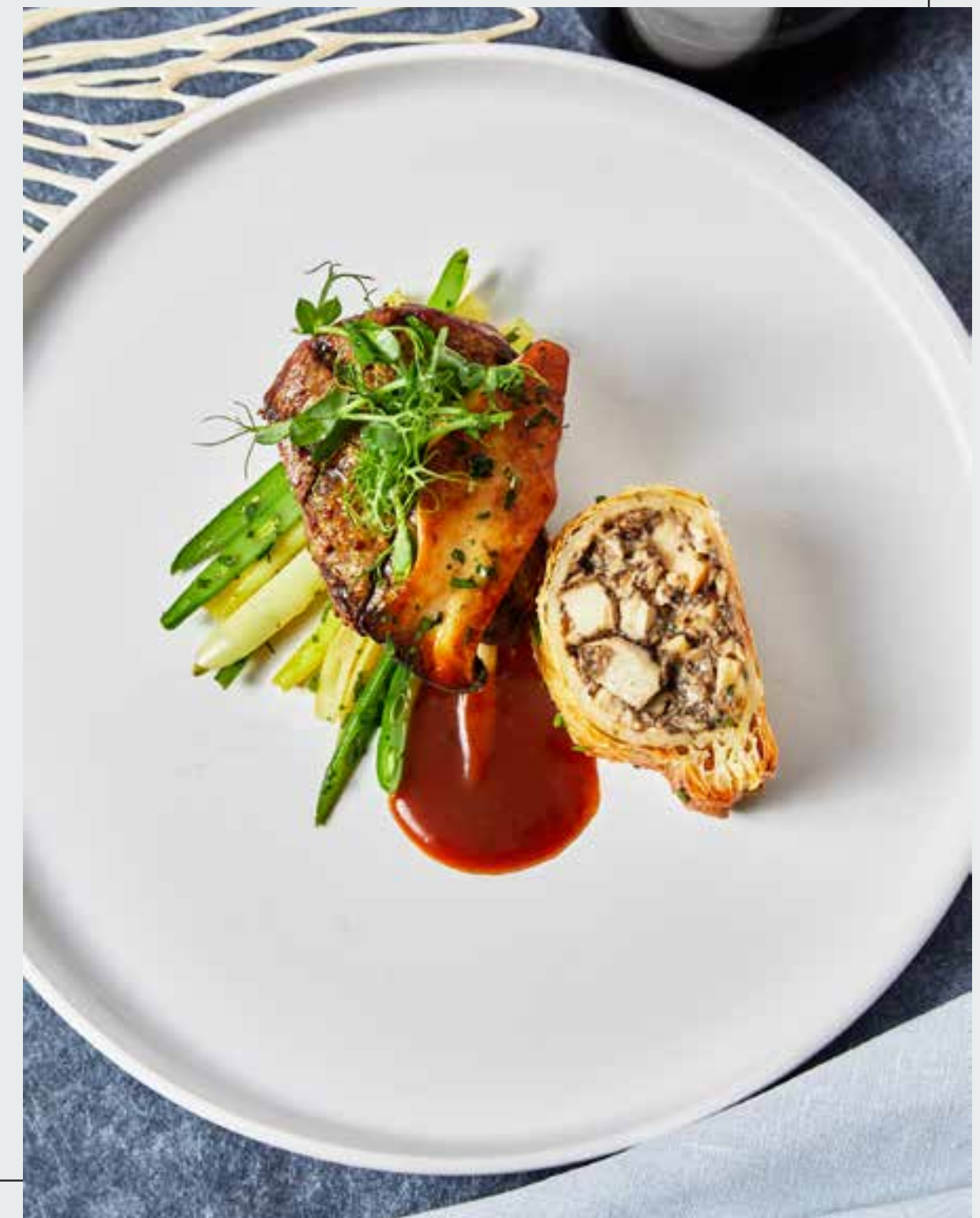
- Eight Butlered Hors d'Oeuvres
- Two Themed Cocktail Stations

### Four-Hour Dinner Reception

- Appetizer with Tableside Bread Service
- Tableside Choice of Entrée
- Wedding Cake
- Butlered Sweets

### Beverage Service

- Five-Hour Premium Open Bar
- Premium Spirits, Assorted Wines & Beers
- Soft Beverages, Juices, Flat & Sparkling Water
- One Specialty Cocktail
- Sparkling Wine Toast during Dinner
- Tableside Wine Service during Dinner
- Tableside Coffee & Tea Service with Dessert









# THE LOADING DOCK







ABIGAIL KIRSCH

AT THE LOADING DOCK

203.357.7400 | [loadingdock@abigailkirsch.com](mailto:loadingdock@abigailkirsch.com) | [abigailkirsch.com](http://abigailkirsch.com)

📷 [@loadingdockevents](#) | [@abigailkirschculinary](#)