



# Shh Events

## Pricing Guide + Packages

At Shh Events, the production services we offer for your wedding day are the same whether you choose an 8 week or Full Service package. Together we will explore the different planning options to choose a package that is best for you!

Included Standard with all packages:

- Initial details and vibe call (after consultation) to discuss your vision for the big day!
- Access to Shh Events Planning Hub, Wedding Timeline, Vendor Recommendations & Tips!
- Creating your full wedding day of timeline & floor plan, shared and updated for all vendors.
- Lead Planner Production Call held 6-8 Weeks Pre-Wedding to familiarize all details.
- Coordinating and running your final site visit with vendors at your venue about 4 weeks before the wedding.
- Custom landing page on Shh Events website for your VIP wedding guests to access timeline and wedding day details.
- Attending and coordinating rehearsal.
- Shh Events team member onsite for full ceremony and reception, until load out, plus planner check in during getting ready time.
- Delivery, set up and strike of all personal items including place cards, guest books, etc. as well as onsite management of all personals.
- Full coordination of wedding day timeline.
- Use of any Shh Events inventory including easels, card boxes, table numbers, and more!

# Planning Options

## 8 Week Package

### "Day Of" | \$2600

- Production Begins 8 Weeks before the wedding.

## Details Management | \$3800

- Final Planning Begins 5 Months before the wedding. (right before you send those invites)!

## Partial Planning | \$6500

*\*Most popular package!*

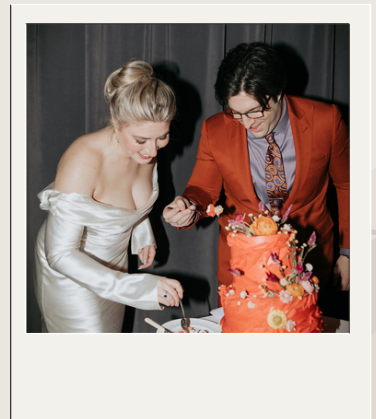
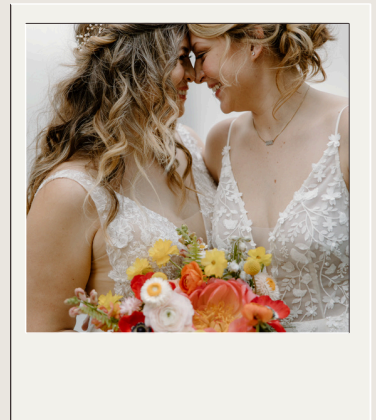
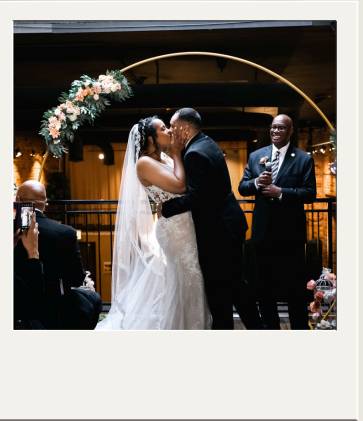
- Planning Starts Immediately
- Stephanie booked as the Lead Planner Onsite

## Full Plans 10% of Contracted Services

**\$9,500 minimum | Limited Availability**

- Planning Starts Immediately
- Stephanie as the Lead Planner Onsite-Full Day
- One-on-one assistance with budget management, guest management, design + proposal development

**For all packages, couples will work with the owner, Stephanie, to get onboarded with Shh Events and set up for planning success!**



# How do the packages compare?

I need a...	Wedding Coordinator		Wedding Planner	
	8 Week \$2600	Details Management \$3800	Partial \$6500	Full \$9500*
The Shh Events Team	Lead + Assistant	Lead + Assistant	<b>Stephanie as Lead</b> + Assistant	<b>Stephanie as Lead</b> + Assistant
Vendor Recommendations		x	x	x
Vendor Cultivation, Outreach, and Proposal Planning			x	x
Monthly Recaps		Starting at 5 Months	x	x
Planning Hub Management			x	x
Design Collaboration			x	x
Attended Vendor Consultation Meetings				x
Guest List + RSVP Tracking				x
Couple Wedding Website Management (Knot/ Zola, etc.)				x
Budget Review & Payment Tracking				x

# Add On's & Incentives

Staffing Add On *May be required for Client DIY's + Decor Needs *Required for Weddings 175+ Guests *May be required for offsite ceremonies	\$400.00
Stephanie as Lead Planner Onsite For 8 Week or Details Management Packages	\$1,000.00
Trucking of Personal Items Exceeding 4 Standard Storage Containers (20 gallon)	\$500.00 + Truck/Van Rental
Holiday Rates, Travel Fees & Lodging Subject to additional pricing *Travel starts 30 miles outside downtown Chicago*	Holiday \$700+ Travel TBD Lodging TBD
Referred by your Bestie who used Shh Events?? Tell me who!	SAVE \$100 on DM and Planning Packages

Packages & Pricing Subject to Change