

ASPEN HAS A NEW ADDRESS!

Nestled in the vibrant heart of downtown Aspen, stands a luxury retreat the world can't wait to meet. A short stroll away from the mountains, amid the iconic charming streets, inspiring arts and culture, and world-renowned dining and shopping, this stunning property offers a location beyond compare. Supremely personalized, high-touch service puts Aspen at your fingertips by discreetly intuiting every aspect of your stay to your utmost desires. Whether it's a weeklong escape with family or friends or a company getaway, prepare for a soul-filling experience.

Introducing: Aspen Street Lodge



View from rooftop terrace

THE *COMFORT* OF SPACE



Our residential style property ensures relaxation and enjoyment with your closest friends, family, or colleagues. Amenities abound in spacious rooms and penthouse suites, each impeccably designed guarantee all whom are welcomed, an inspired retreat.

User-friendly and technologically advanced systems allow for ultimate control at your fingertips with ease. Enjoy boundless outdoor living with direct park access, and three large terraces to soak in the mountain views and famed Colorado sunshine during all four seasons.

PERFECTLY *PERSONALIZED*



ACCOMODATIONS

Rooms	Square Footage	Bedding	Connectors
Lodge Room 01	334	1 King Bed	643 sq ft
Lodge Room 02	309	1 King Bed	
Lodge Room 03	340	1 King Bed	
Lodge Room 04	309	1 King Bed	649 sq ft
Lodge Room 05	640	1 King Bed	1,510 sq ft
Lodge Room 06	408	2 Queen Beds	
Lodge Room 07	462	1 King Bed	
Lodge Room 08	548 + terrace	4 Full Beds (bunk style) + 1 Full day bed in sitting area	919 sq ft
Lodge Room 09	371 + terrace	2 Queen Beds (bunk style)	
Penthouse Suite [1 or 2 bedroom]	3,254 + two terraces	1 King Bed + 1 King Bed / Office	3,254 sq ft
Maximum sleeping capacity: 32-36 guests comfortably when maximizing bedding arrangements			

Full buyouts ensure an at-home feeling for your entire group. Fully equipped with kitchen, rooftop, media room, game room, yoga room, and a multitude of connecting rooms and entertaining options. You will find comfort and wellbeing with exclusive usage and access for your private group.

EXCLUSIVITY
MEETS
FLEXIBILITY

GATHER

Venue	Square Footage	Capacity
Bar & Media Room	1,383	49 guests for reception, with access to the Francis Whittaker Park
Shadow Mountain Terrace	1,055	49 guests for reception, 26-30 guests seated
Aspen Mountain Terrace	948	30 guests for reception, 16 seated
Rooftop Terrace	1,386	49 guests for reception, 30-35 seated
Basement Lounge	1,800	75 guests for reception, 40-50 seated

FIND THRILL IN STUNNING SPACES

Our game room, media room and bar are fully stocked and outfitted with all the amenities and comforts you may seek. Including a ping pong table, shuffleboard table, bubble hockey, foosball table, and a polycade retro arcade along with board games galore.

Bar and island featuring a wine fridge, lockable wine and liquor cabinet, built in refrigeration, microwave and oven make this the perfect location for après or late-night hangouts. Sonos and Control 4 automation complete these spaces for a supreme entertaining experience.

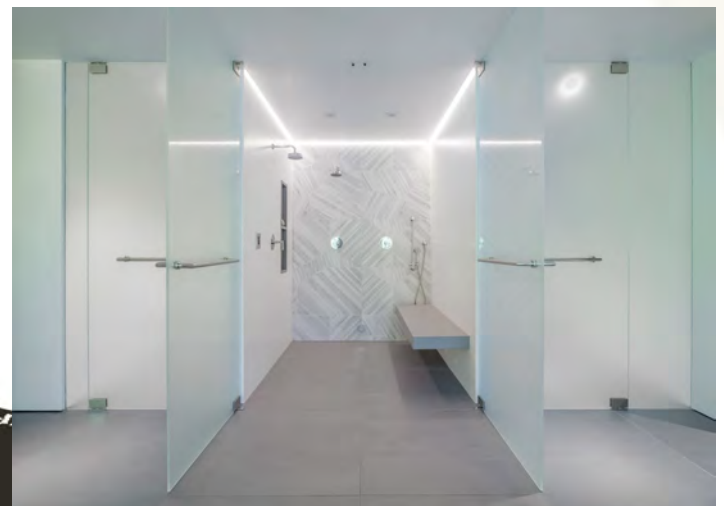
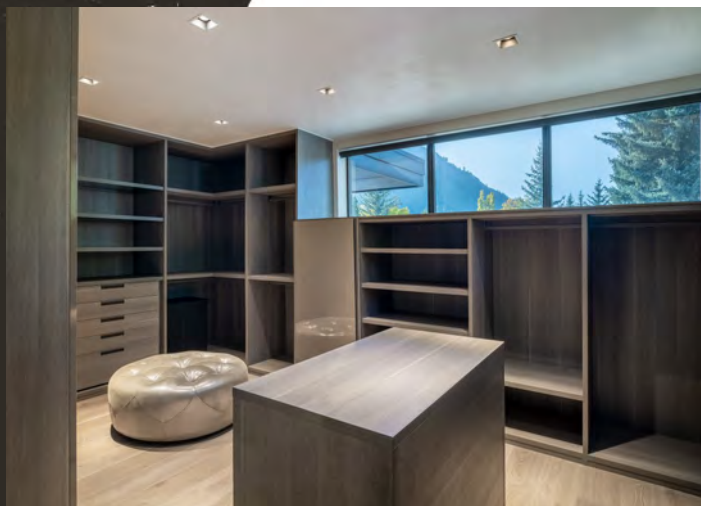
The game room has a cozy lounge area with a double-sided fireplace and opens onto a private patio as well as the quaint Francis Whitaker Park.



PENTHOUSE MASTER SUITE



Residential living at its finest. The master penthouse suite features two private patios, double wash closets, steam shower, a luxurious soaking tub, radiant-heated floors, a spacious walk-in closet complete with washer/dryer and make-up vanity. Enjoy this stunning suite with vaulted ceilings, black-out shades, fireplace, and sitting area. A perfect escape to unwind and find an ultimate state of comfort and relaxation. Designer Italian furnishings complete this king suite with no detail spared.



PENTHOUSE LIVING

Enjoy spacious living, dining, sitting, bar, and kitchen areas appointed with contemporary designer furnishings and luxury appliances. The office or yoga room are both easily convertible to a second king suite or dining area pending group desires. Flow out onto two spacious outdoor patios with direct Aspen Mountain and Shadow Mountain views. Whether you seek entertainment or cozying up next to the fire for an intimate evening, the penthouse welcomes you home.



ROOFTOP + PENTHOUSE TERRACES



Three outdoor terraces with panoramic views of Aspen and Shadow Mountain, provide endless possibilities for events or relaxation. The rooftop terrace features a heated pool, hot tub, and outdoor kitchen complete with top of the line Kalamazoo appliances including a grill and smoker, pizza oven and ample refrigeration. This hosting haven can accommodate gatherings of up to 49 guests. Our on-site chef is delighted to customize menus and bring any vision to life; from cozy après delights to five-course dinner experiences, our culinary services are to be made yours. Work with our onsite event specialist for personalized recommendations on any desired event enhancements or additional décor.



LODGE ROOMS

Refined accommodation with four spacious king bedded lodge rooms appointed with sophisticated fixtures and finishes with capability to connect if desired. Neo remotes allow for control of all room functionalities - temperature, shades, lighting, and all TV applications. Each room features custom hand-painted wallpaper done by artist Porter Taleo. Bedside tables are adorned with built-in cordless charging for devices with ease and sleek lighting. Nespresso coffee makers and stocked mini refrigerators, along with custom bath amenities enhance your in-room experience.



PREMIUM LODGE ROOMS

Two premium king-bedded rooms complete with fireplaces and soaking tubs, along with one double queen bedded room are appointed with sophisticated fixtures and finishes with capability to connect and create a two- or three-bedroom suite. Neo remotes allow for control of all room functionalities to include temperature, shades, lighting, and all tv applications. Each room features custom hand painted wallpaper done by artist Porter Taleo. Bedside tables are adorned with sleek lighting and built in cordless charging for devices. Nespresso coffee makers and stocked mini refrigerators, along with luxurious bath products complete your in-room comfort and amenities.



BUNK ROOMS

Two bunk rooms provide flexibility by offering additional capacity with trundle bed pullouts. Lodge room 8 features four full bedded bunks with two twin sized trundles. Lodge room 9 features two queen bedded bunks with one full sized trundle. A living area with day bed in lodge room 8 allows for a connection to room 9 and shared balcony access with views of Shadow Mountain. Larger bathrooms with double vanities offer comfort to support additional guest occupancy. Floor-to-ceiling marble in the bathrooms with custom bath amenities ensure the residential comforts you seek during your Aspen retreat!



INQUIRE

email: brittany@aspennstreetlodge.com

phone: [\(970\) 989-3090](tel:(970)989-3090)

website: aspennstreetlodge.com

